

QUICKGUIDE: New Zenjet Range

English

ZenJet



Copyright © Zenjet Coding

Zenjet Coding
1385 Route d'Upie
26 800 Etoile sur Rhône
France

Tel.: +33 (0) 4 7582 8453

E-Mail: info@zenjet-coding.com

Version: 4.2

SUMMARY

1

- **SCOPE OF DELIVERY**
- Unpacking
- Check scope of delivery

2

- **INSTALLATION AND FIRST TIME OPERATION**
- Use mounting system unit to install printer on a conveyor
- Insert ink cartridge and adjust print distance
- Make connections

3

- **CREATE MESSAGES WITH DESIGNline SOFTWARE**
- Install DESIGNline software on a PC
- Create your own print images
- Select the proper printing parameters

4

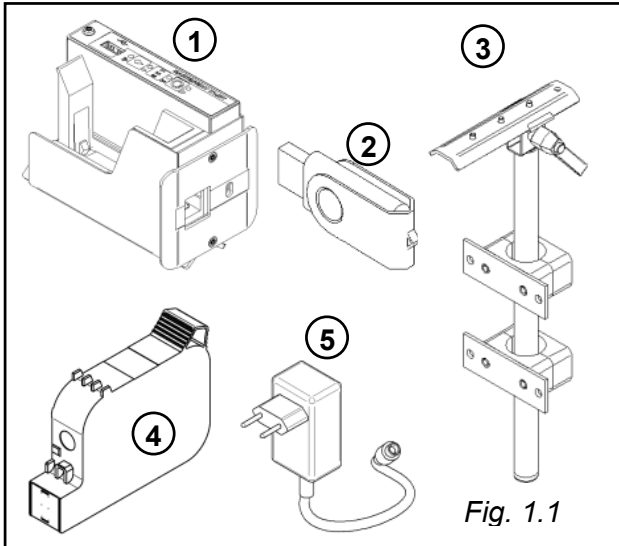
- **MAIN KEYS AND CORRESPONDING FUNCTIONS**
- 9 resident messages selection and print test
- Print mode on pause
- Reset of ink level and purge

5

- **ZENJET DYNAMIC OR ZENJET HANDY WIFI PRINTER**
- Characteristic and Requirements
- Set up and password (PC, Tablet and Smartphone or Android)

NOTE: The Quickguide doesn't replace the study of the original operating manual

1. SCOPE OF DELIVERY¹⁾



1. Zenjet Printer Unit

Optional extras:

2. USB-stick

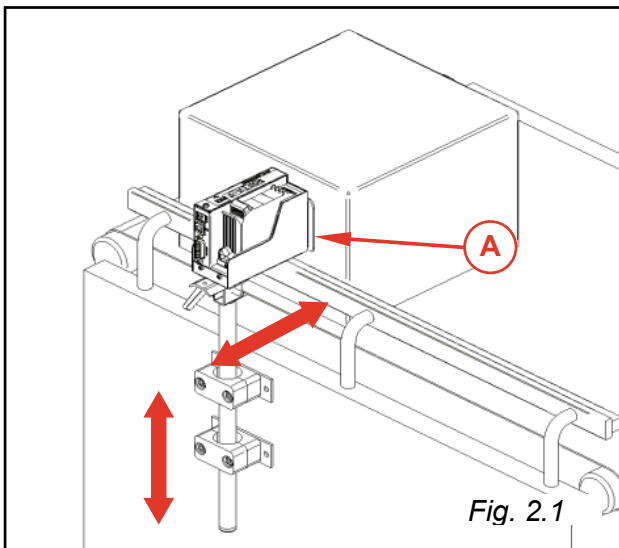
3. Mounting bracket

4. Ink cartridge

5. Power supply with country-specific power plugs

1) Scope of delivery can differ due to customization

2. INSTALLATION AND FIRST TIME OPERATION

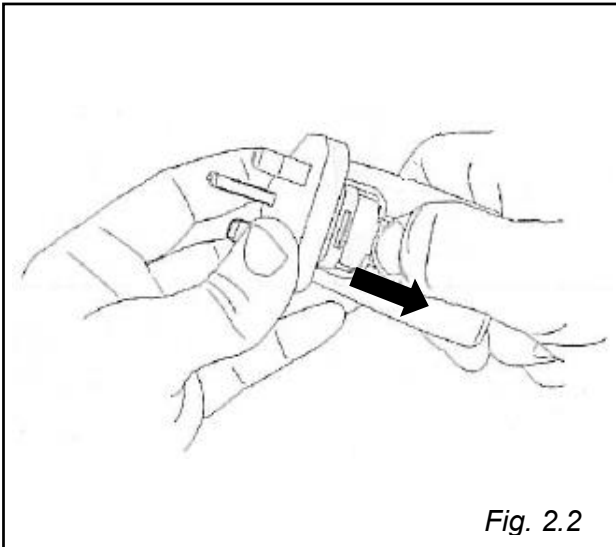


■ Install the bracket holder at the conveyor.

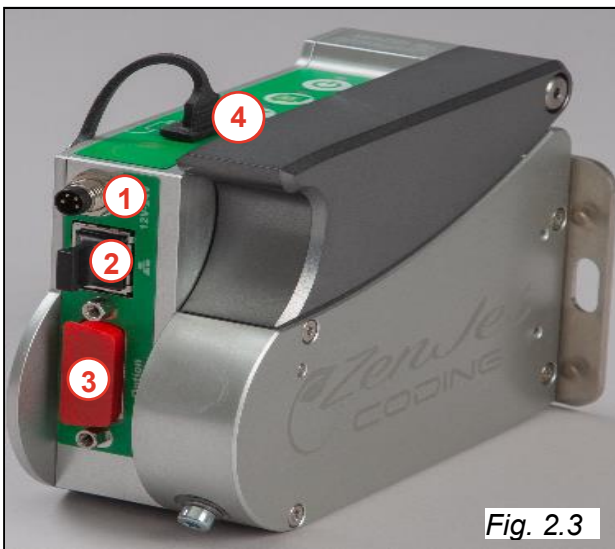
■ Insert and arrest the mounting bracket in the bracket holder.

■ Install the mounting rail under the print module and insert and arrest it in the clamp of the mounting bracket.

■ Insert the ink cartridge. Align the print module by height- and horizontal adjustability of the installation holder to the product (see Fig. 2.1). The best distance (see A in Fig. 2.1) is 0,5 – 4mm from the print module to the product.



- Enclosed the power supply are several country-specific power plugs. Mount the right power plug to the power supply (Fig. 2.2)
- Connect the power supply to the socket ①. It is a M8 connector for the new range. (Fig. 2.3)
- If required establish a network connection via Ethernet connector ②
- You have the choice to connect some optional device, i.e. shaft encoder, to the socket. ③
- Point ④ shows the possibility to connect a USB-stick (USB 2.0).



3. CREATE MESSAGES WITH DESIGNline SOFTWARE

Print images cannot be created on the Zenjet printer unit.

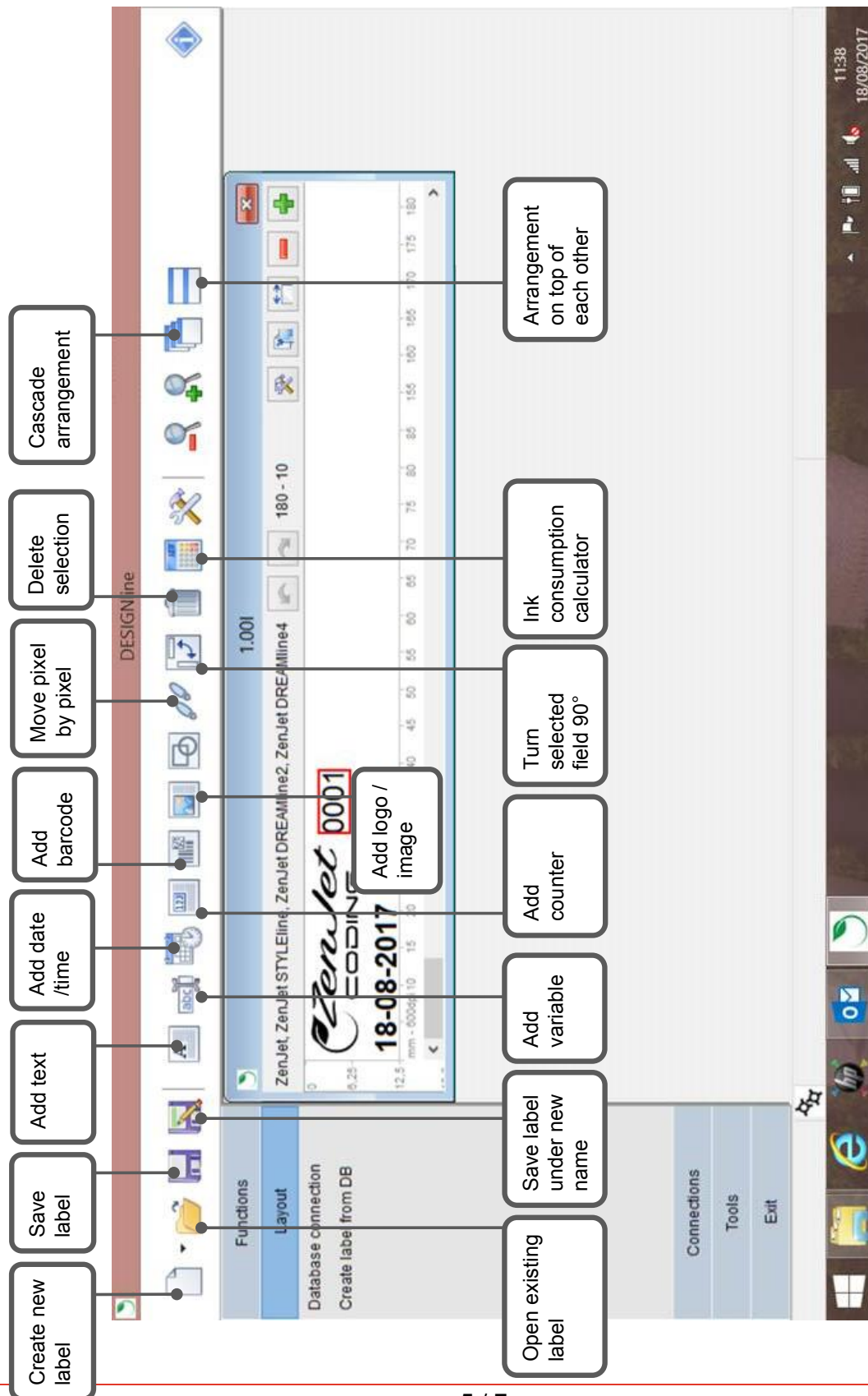
Print images can be created and edit with the software *DESIGNline*, which is saved on the USB-stick delivered with the printer. Therefore, the *DESIGNline* software must be first installed on a PC to enable you to create message.

To send images and printing parameters to the Zenjet printer the USB-stick must be first connected to the Zenjet to get all system data.

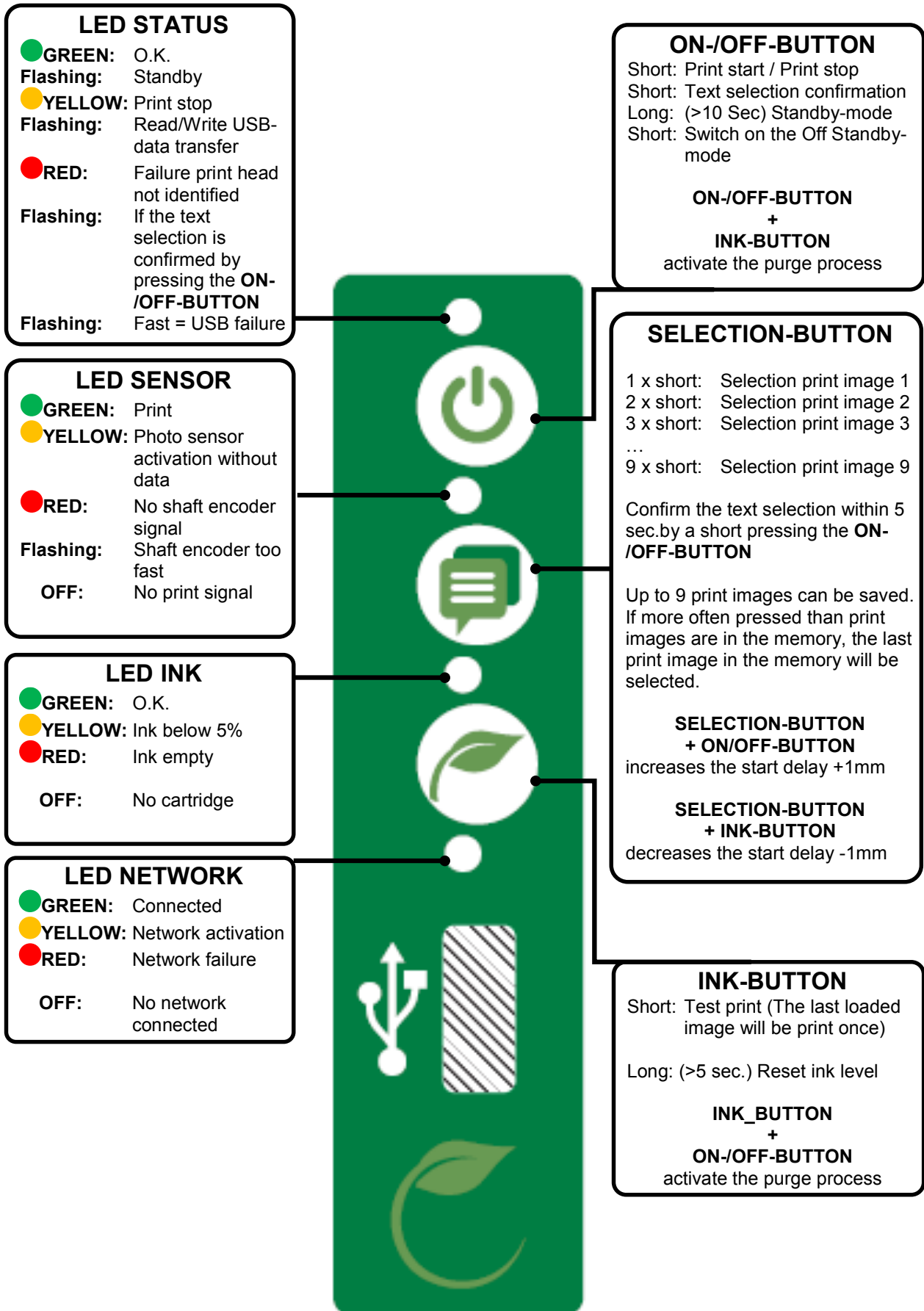
You can also use one Ethernet cable to connect directly your printer to a PC to transfer the messages and the parameters (instead of using the USB-stick).

The user interface of the *DESIGNline* software is shown on page 5.

DESIGNline SOFTWARE USER INTERFACE



4. MAIN KEYS AND CORRESPONDING FUNCTIONS



5. ZENJET DYNAMIC OR ZENJET HANDY WIFI PRINTER

Characteristics	
Name of the WiFi network (SSID)	Serial number of Zenjet Dynamic or Handy
Password	12345678
WiFi IP address (DHCP)	192.168.3.1 (created by default)
Requirements	
System	ZenJet Dynamic or Handy Wifi
Software version	> 3.022a
DESIGNline Version	> 2.0.18.0

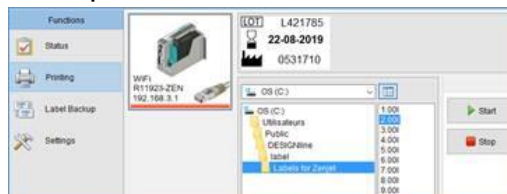
The WiFi module serves as a pure access point. This allows only direct access to the device. It is not possible to forward signals via the WiFi interface to a physical network. Accesses to company networks are not possible.

WLAN Access: Access to the WiFi is possible from any WLAN compatible device.

Our Advice: Use a PC or a tablet to create messages and defined parameters. Smart phone or Android can be used as Web browser to select messages.

Procedure to set up a connection to a PC, a Tablet or a Smartphone:

1. Power on the Zenjet Dynamic printer or Zenjet Handy Wifi to start the connection.
2. Scroll the WiFi connections available on your PC, your Tablet or on your Smartphone.
3. Select the “network” named as the serial number of the printer, for eg: R11923.
4. Connect it by using the password: **12345678**. Usually, the connection to the printer mentions “no internet access” which is normal.
5. Then if your system has a Windows OS and the applicative DESIGNline is installed, you can point the printer connection by using the **TCP IP 192.168.3.1**, to work as usually with DESIGNline. See picture here below:



6. In any case, you can open your World Wide Web browser, as Internet explorer, Google Chrome, Firefox, Opera, Safari, Flock..., and type the address: **192.168.3.1** in the address bar to reach the printer web page. See the 3 pictures here below:

